

COTTENHAM PARK ROAD

APPROXIMATE GROSS INTERNAL FLOOR AREA :
2163 SQ FT- 201.0 SQ M



FOR ILLUSTRATION PURPOSES ONLY
THIS FLOOR PLAN SHOULD BE USED AS A GENERAL OUTLINE FOR GUIDANCE ONLY AND DOES NOT CONSTITUTE IN WHOLE OR IN PART AN OFFER OR CONTRACT.
ANY INTENDING PURCHASER OR LESSEE SHOULD SATISFY THEMSELVES BY INSPECTION, SEARCHES, ENQUIRIES AND FULL SURVEY AS TO THE CORRECTNESS OF EACH STATEMENT.
ANY AREAS, MEASUREMENTS OR DISTANCES QUOTED ARE APPROXIMATE AND SHOULD NOT BE USED TO VALUE A PROPERTY OR BE THE BASIS OF ANY SALE OR LET.

Drawn in accordance with RICS guidelines this plan is for guidance only and does not constitute in whole or part an offer or contract. It is not to scale (unless stated) and windows/door openings are approximate. Whilst every care has been taken in the preparation of this plan, please check all dimensions, shapes and compass bearings before making any decisions reliant upon them. Areas, measurements/distances are approximate and should not be used to value a property or be the base of any sale/let. Any intending purchaser or lessee should satisfy themselves through inspection, searches, enquiries and full survey as to the correctness of each statement.

Cottenham Park Road, West Wimbledon, SW20 0TB

£1,450,000 Freehold



95 High Street Wimbledon SW19
020 8016 9700
wvsales@fullergilbert.co.uk

Fuller Gilbert
& Company Est. 2001

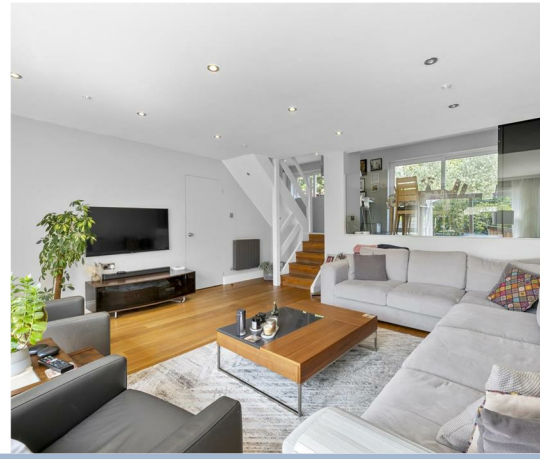
www.fullergilbert.co.uk

38 - 40 Gloucester Road SW7
020 7581 0154
sksales@fullergilbert.co.uk

for Sale

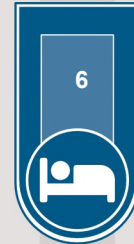
Fuller Gilbert
& Company Est. 2001

• Estate Agents • Valuers • Development Consultants • Property Consultants • Private Office • Asset & Capital Management



THE LOCATION

The property is situated on a quiet residential cul de sac on the slopes leading to Wimbledon Common, well placed for access into Raynes Park with its commuter station offering fast and frequent services to London Waterloo. A selection of useful shops (including Waitrose) and businesses, the green spaces of Wimbledon Common, Holland Gardens and Cottenham Park are also within easy reach. The area is well served for local schools in both the state and private sector.



THE PROPERTY

On the ground floor there is a bright, comfy living area and a superb open plan kitchen/family room. There is a housekeeper's/granny flat with bedroom, shower room and utility cupboard. This could also be used as a home office.
 On the split level first floor are four bedrooms, one en suite and a shower room.
 On the split level second floor are one very large bedroom, another bedroom and a bathroom.
 Outside, there is a landscaped rear garden with large terrace. There is a front garden with off-street parking.
 This is a particularly bright and spacious house in a great area - an early viewing is recommended!

Energy Efficiency Rating		
	Current	Potential
Very energy efficient - lower running costs		
(92 plus) A		
(81-91) B		
(69-80) C		
(55-68) D		
(39-54) E		
(21-38) F		
(1-20) G		
Not energy efficient - higher running costs		
England & Wales	71	82
	EU Directive 2002/91/EC	

Environmental Impact (CO ₂) Rating		
	Current	Potential
Very environmentally friendly - lower CO ₂ emissions		
(92 plus) A		
(81-91) B		
(69-80) C		
(55-68) D		
(39-54) E		
(21-38) F		
(1-20) G		
Not environmentally friendly - higher CO ₂ emissions		
England & Wales		
	EU Directive 2002/91/EC	